

Delivering leading edge, innovative power solutions for more than 30 years....

Model:GTM43004P-WWVV-x.x-P3 (SR with NA Plug 3 pin)

August 17, 2019

## GTM43004P-WWVV-x.x-P3 (SR with NA Plug 3 pin)

### Information

Model Number GTM43004P-WWVV-x.x-P3 (SR with NA Plug 3 pin)

Description GTM43004P-WWVV-x.x-P3 (SR with NA Plug 3 pin), Medical Power Supply, Potted/Encapsulated in plastic housing, Regulated Switchmode AC-DC Power Supply AC Adaptor, , Input Rating: 100-240V~, 50-60 Hz, North America Blades with Ground Prong, Class I, (3) Conductors, Output Rating: 120 Watts, Power rating with convection cooling (W) , 5-48V in 0.1V increments, Approvals: cRUus; WEEE; China RoHS; CE; VCCI; Ukraine; RoHS; PSE; Level V; Designed to meet EN 60950-1; Designed to meet EN 60601-1; Designed to meet 60335; cULus; Designed to meet 60950-1; Class I;

Model Picture



Agency Documents <http://www.globtek.info/certs/GTM43004P/>

CE EC-Declaration [https://www.globtek.com/pdf/ec\\_declaration/a0Oa000000J9VwEAL](https://www.globtek.com/pdf/ec_declaration/a0Oa000000J9VwEAL)

RoHS/RoHS2 Declaration [https://www.globtek.com/pdf/rohs\\_cert/a0Oa000000J9VwEAL](https://www.globtek.com/pdf/rohs_cert/a0Oa000000J9VwEAL)

REACH Declaration [https://www.globtek.com/pdf/iso\\_certificates/REACH.pdf](https://www.globtek.com/pdf/iso_certificates/REACH.pdf)

Conflict Minerals Declaration <https://www.globtek.com/pdf/conflict-minerals.pdf>

Delivering leading edge, innovative power solutions for more than **30** years....

Model:GTM43004P-WWVV-x.x-P3 (SR with NA Plug 3 pin)

August 17, 2019

**Model Parameters**

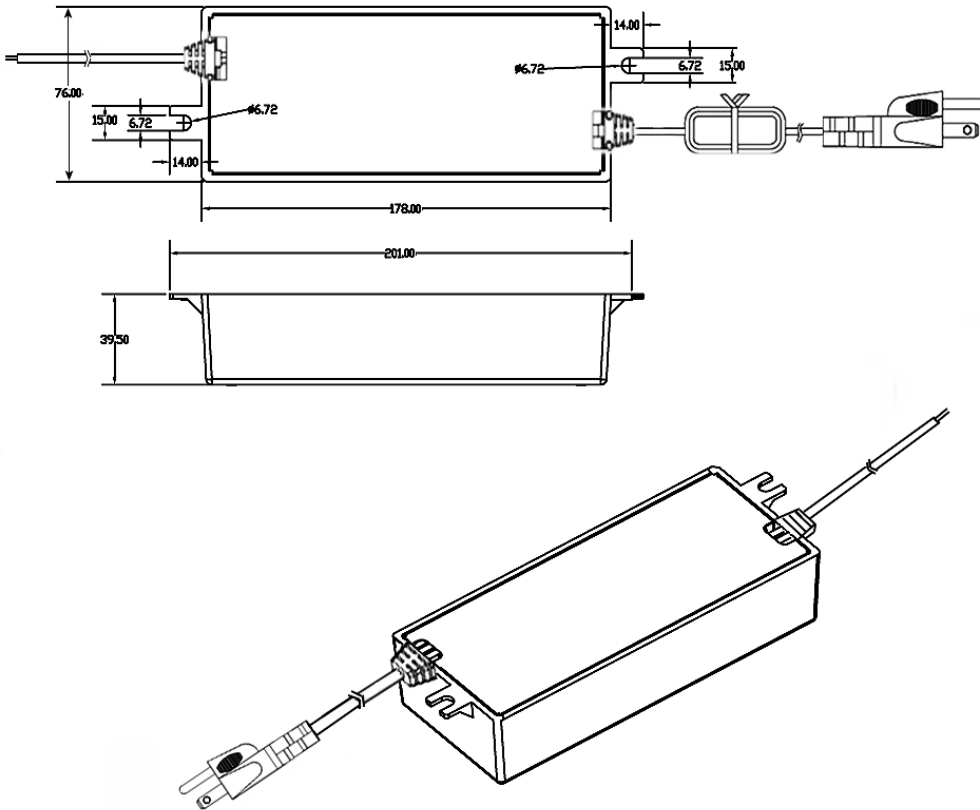
Type	Potted/Encapsulated in plastic housing
Technology	Regulated Switchmode AC-DC Power Supply AC Adaptor
Category	Medical Power Supply
Input Voltage	100-240V~, 50-60 Hz
I/P Amps (A)	2.0A
Wattage (W)	120.0
Vout Range (V)	5-48
Efficiency Level	V
Ingress Protection	IP68
Size (mm)	178.0*76.0*39.5

Delivering leading edge, innovative power solutions for more than 30 years....

Model:GTM43004P-WWVV-x.x-P3 (SR with NA Plug 3 pin)

August 17, 2019

ENCLOSURE



Delivering leading edge, innovative power solutions for more than **30** years....

Model:GTM43004P-WWVV-x.x-P3 (SR with NA Plug 3 pin)

August 17, 2019

**RATING TABLE**

Model Number	Voltage	Amps(A)	Watts(W)	RFQ
GTM43004P-9016-7.0-P3	9 V	10	90.00	<a href="#">RFQ</a>
GTM43004P-12035-5.0-P330	30 V	4	120.00	<a href="#">RFQ</a>

Delivering leading edge, innovative power solutions for more than 30 years....

Model:GTM43004P-WWVV-x.x-P3 (SR with NA Plug 3 pin)

August 17, 2019

**SPECIFICATIONS****A) ELECTRICAL SPECIFICATIONS:**

01. Input Voltage: Specified 90-264 Vac, Nameplate rated: 100-240Vac
02. Input Frequency: Specified 47-63 Hz, Nameplate rated 50-60Hz
03. Output Regulation: +/- 5% measured at the output connector
04. Line Voltage Regulation: +/- 1% typical measured at the output connector
05. Output Ripple (Vp-p): +/-1% or 200 mV whichever is greater, measured at 20 MHz bandwidth with 0.1 uf ceramic capacitor in parallel with 47 uf electrolytic capacitor connected at the end of the output connector at nominal line
06. Turn-ON/OFF Overshoot: 10% maximum, 1 mS typical recovery time for 25% step load
07. Turn-ON Delay: 3000 mS, maximum @ full load, nominal line
08. Hold-Up Time: 10 mS typical @ nominal input voltage and full load
09. Inrush Current: 40A typical 115VAC input and 60A typical at 230VAC input
10. Switching Frequency: 100 KHz typical

**B) PROTECTION**

01. Over-Voltage: AC cycling required to reset output
02. Short Circuit: AC cycling required to reset output
03. Input Protection: Input line fusing

**C) SAFETY**

1. Dielectric Withstand Voltage: 5656 Vdc from primary to secondary
2. Earth Leakage Current: Maximum allowed values: 5 mA NC(Normal condition); 10 mA SFC(single fault condition)
3. Touch Current: Maximum allowed values: 100uA NC(Normal condition) 500uA SFC(single fault condition)
4. Earth continuity test:<0.1 Ohm or < 0.2 Ohm when with a non-detachable Power Supply cord
5. Means of Protection: 2 x MOPP
6. Primary to Secondary Bridging Capacitor: (2) \* Y1 type capacitors in series

**D) OTHER:**

01. MTBF: 200,000 Hours @ 25°C ambient temperature
02. Operating Temperature: 0°C to 40°C ambient temperature
03. Humidity: 0% to 90% relative humidity
04. Storage Temperature: -10°C to 80°C
05. Cooling: Convection

**E) ENCLOSURE**

01. Size: 178.0\*76.0\*39.5 mm +/-1.0 mm
02. Markings: Label

Delivering leading edge, innovative power solutions for more than **30** years....

Model:GTM43004P-WWVV-x.x-P3 (SR with NA Plug 3 pin)

August 17, 2019

DERATING CURVE

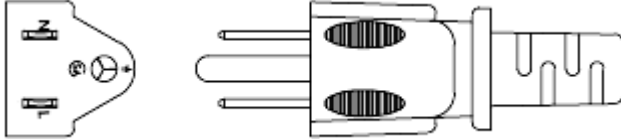
Delivering leading edge, innovative power solutions for more than **30** years....

Model:GTM43004P-WWVV-x.x-P3 (SR with NA Plug 3 pin)

August 17, 2019

### Input Configuration

Description North America Blades with Ground Prong, Class I, (3) Conductors



Delivering leading edge, innovative power solutions for more than 30 years....

Model:GTM43004P-WWVV-x.x-P3 (SR with NA Plug 3 pin)

August 17, 2019

**Output Configuration**

Common output connector options:


 L Type (Coaxial  
5.5x2.5mm plug)

 C Type (Coaxial  
5.5x2.1mm plug)

 K Type (Coaxial  
3.5x1.3mm plug)

 LL Type (5.5x2.5mm  
Locking 760k type)

 CL Type (5.5x2.1mm  
Locking S761k type)

 ML2 Type (Molex  
housing 43025-0200)


YL3 Type (KPPX-3P)



YL4 Type (KPPX-4P)


 EJ1/2/3/4/5 (EIAJ  
RC-5320A type  
connectors)


MSB Type (Micro USB)


 USBC Type (USB Type  
C)

 Inquire for custom  
design

 For a comprehensive list of options, [click here](#)

Contact GlobTek for your specific requirements or custom solutions.











Delivering leading edge, innovative power solutions for more than 30 years....

Model:GTM43004P-WWVV-x.x-P3 (SR with NA Plug 3 pin)

August 17, 2019

## Approvals

Logo	Description
	CE Mark: tested to comply with EN61000-3-2, EN61000-3-3 and EN50082-1, including EN61000-4-2, EN61000-4-3, EN61000-4-4, EN61000-4-5, EN61000-4-6, EN61000-4-8, EN61000-4-11, EN61001-1-2-2007 EMI: Complies with EN55011 CLASS B and FCC Part 15 B
	CHINA SJ/T 11364-2014, China RoHS Chart: <a href="http://en.globtek.com/globtek-rohs.php">http://en.globtek.com/globtek-rohs.php</a>
No Logo	Designed to meet cRUus UL Recognized Component 3rd Edition w-RM ANSI-AAMI ES60601-1 (2005 + C1:09 + A2:10) and CAN-CSA-C22.2 No. 60601-1 (2008) 3rd Edition
No Logo	Designed to meet UL60950-1, cULus to UL 60950-1, 2nd Edition, 2007-03-27 and CSA C22.2 No. 60950-1-07, 2nd Edition, 2007-03
No Logo	Designed to meet cULus LISTED UL 1310 Class 2 up to 36 volts, 5.0 Amps
No logo	Designed to meet EN 60335-1 (Safety of Household and Similar Electrical Appliances, Part 1: General Requirements) up to 36 volts
No Logo	Designed to meet EN 60601-1:2006 + A11:2011 +A1:2013 3rd Edition
No Logo	Designed to meet EN 60950-1 :2006+Am 1:2010+Am 11 :2009+Am 12:2011+A2:2013
	Indoor Use Only - Mark is on the label or Molded in the case
<b>EFFICIENCY LEVEL</b> 	Efficiency: complies to section 301 of Energy Independence and Security Act (EISA) complies with Energy Star tier 2 (North America), ECP tier 2 (China), MEPS tier 2 (Australia), Code of Conduct (Europe)
 GlobTek, Inc.	JAPAN TUV Rheinland-PSE GlobTek Inc to J60950-1(H26) , J55022(H22),J3000(H25).Please follow the procedure listed in the following link for proper import to Japan: <a href="http://en.globtek.com/importing-to-japan.php">http://en.globtek.com/importing-to-japan.php</a> .
RoHS	Specifications of directive 2011/65/EU Annex VI (ROHS-2) with amendment 2015/863-EU (ROHS-3) <a href="http://www.ce-mark.com/Rohs%20final.pdf">http://www.ce-mark.com/Rohs%20final.pdf</a>
 10276	Ukraine UKRSepro (Document: <a href="http://www.globtek.com/html/iso_certificates/GT_Ukraine.pdf">www.globtek.com/html/iso_certificates/GT_Ukraine.pdf</a> )
	Japan: Voluntary Control Council for Interference (VCCI)
	WEEE: Complies with EU 2012/19/EU ( <a href="http://ec.europa.eu/environment/waste/weee/index_en.htm">http://ec.europa.eu/environment/waste/weee/index_en.htm</a> ) Mark is on the label or Molded in the case