

Delivering leading edge, innovative power solutions for more than **30** years....

Model:GT-91087

July 16, 2019

PoE Powered Device (PD) Dc/DC converter providing 5-48Vdc meeting IEEE802.3af

Information

Model Number GT-91087

Description GT-91087, POE PD Module DC/DC, PCB Mounted/DIP, Power Over Ethernet Powered Device Converter (IEEE802.3af PoE PD) Power Supply AC Adaptor, , Input Rating: 36-60 VDC, Pin 1: N/C, Pin 2,3:-V, Pin 4,5: +V, Output Rating: 15.4 Watts, Power rating with convection cooling (W) , 5-24V in 0.1V increments, Approvals: RoHS; China RoHS;

Model Picture



Agency

Documents

CE

EC-Declaration https://www.globtek.com/pdf/ec_declaration/a0O30000007P7YrEAK

RoHS/RoHS2

Declaration https://www.globtek.com/pdf/rohs_cert/a0O30000007P7YrEAK

REACH

Declaration https://www.globtek.com/pdf/iso_certificates/REACH.pdf

Conflict

Minerals <https://www.globtek.com/pdf/conflict-minerals.pdf>

Declaration

Delivering leading edge, innovative power solutions for more than **30** years....

Model:GT-91087

July 16, 2019

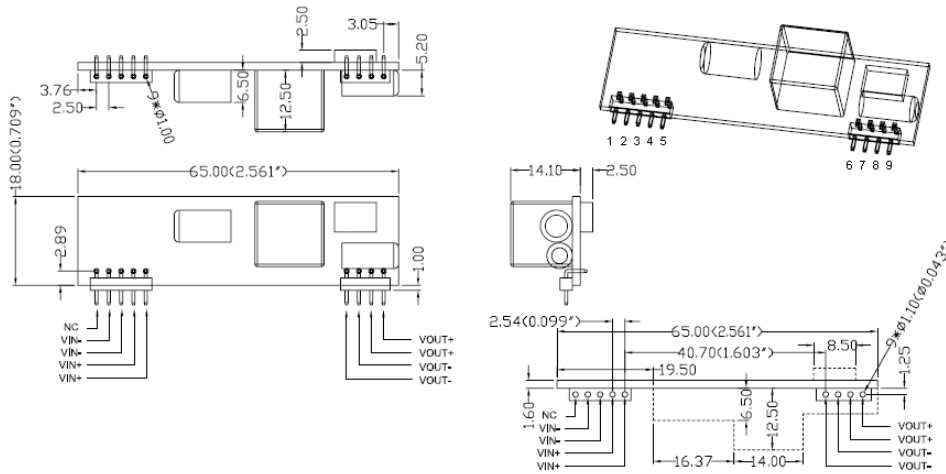
Model Parameters

Type	PCB Mounted/DIP
Technology	Power Over Ethernet Powered Device Converter (IEEE802.3af PoE PD) Power Supply AC Adaptor
Category	POE PD Module DC/DC
Input Voltage	36-60 VDC
I/P Amps (A)	0.5A
Wattage (W)	15.4
Vout Range (V)	5-24
Efficiency Level	
Ingress Protection	
Size (mm)	65*18*14

Delivering leading edge, innovative power solutions for more than 30 years....

Model:GT-91087

July 16, 2019

ENCLOSURE


Delivering leading edge, innovative power solutions for more than **30** years....

Model:GT-91087

July 16, 2019

RATING TABLE

Model Number	Voltage(V)	Amps(A)	Watts(W)	RFQ
GT-91087-12055	12.0	2.4	12.00	RFQ
GT-91087-151212	15.1	1.28	15.36	RFQ
GT-91087-151313	15.1	1.18	15.34	RFQ
GT-91087-151414	15.1	1.1	15.40	RFQ
GT-91087-151515	15.1	1.02	15.30	RFQ
GT-91087-151616	15.1	0.96	15.36	RFQ
GT-91087-151717	15.1	0.91	15.47	RFQ
GT-91087-151818	15.1	0.83	14.94	RFQ
GT-91087-151919	15.1	0.81	15.39	RFQ
GT-91087-152020	15.1	0.77	15.40	RFQ
GT-91087-152121	15.1	0.73	15.33	RFQ
GT-91087-152222	15.1	0.7	15.40	RFQ
GT-91087-152323	15.1	0.67	15.41	RFQ
GT-91087-152424	15.1	0.64	15.36	RFQ

SPECIFICATIONS

A) ELECTRICAL SPECIFICATIONS:

01. DC Input Voltage: 36 – 60V
02. Output Regulation: +/- 5% measured at the output connector
03. Line Voltage Regulation: +/- 0.2% typical measured at the output connector
04. Output Ripple (Vp-p): 1% or 100mV max, measured at 20 MHz bandwidth with 0.1 uf ceramic capacitor in parallel with a low impedance 47 uf electrolytic capacitor connected at the output
05. Switching Frequency: 100 KHz typical
06. Efficiency : 80% typ

B) PROTECTION

01. Under Voltage Lockout: 30Vdc
02. Short Circuit: Protected unit will auto recover upon removal of fault
03. Current Limiting: 110% to 175% of output rating
04. Thermal: Internally protected against over-temperature conditions

C) SAFETY & EMC

01. Isolation Voltage : 1000Vdc
02. Isolation Resistance :100M ohms (min)
03. Designed to UL/EN/IEC 60950-1
04. Meet FCC Class B standard
05. Meet EN55022 Class B standard

D) OTHER:

01. MTBF: 200,000 Hours @ 25°C ambient temperature
02. Operating Temperature: -15°C to 65°C ambient temperature
03. Humidity: 0% to 90% relative humidity
04. Storage Temperature: -40°C to 85°C
05. Cooling: Free air cooling
06. Interoperability: Complies with IEEE 802.3 AF, tested by UNH-iOL
07. Input Set Classification Resistance : 24.9K ohms

E) ENCLOSURE

01. SIZE : 68*14*19 (L*W*H)m/m
02. Markings: Label and/or Pad Printed and/or Molded in the case

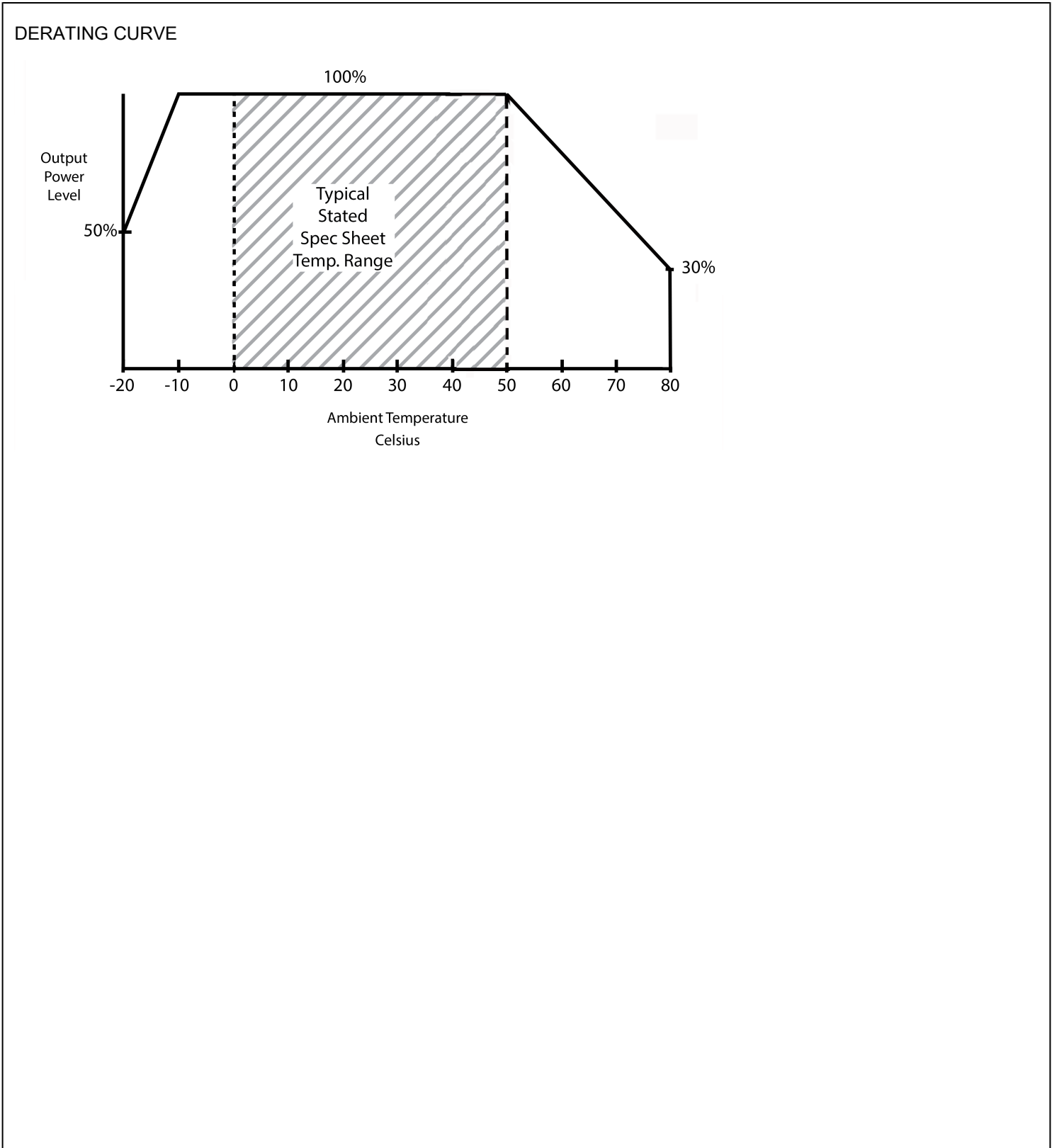
F) OPTIONS

01. Tighter output voltage regulation, +/- 2% or +/-3%
02. Reduced Vp-p Output Ripple
03. Custom Output Voltage, in 0.1V increment

Delivering leading edge, innovative power solutions for more than **30** years....

Model:GT-91087

July 16, 2019



Delivering leading edge, innovative power solutions for more than **30** years....

Model:GT-91087

July 16, 2019

Input Configuration

Description Pin 1: N/C, Pin 2,3:-V, Pin 4,5: +V

Delivering leading edge, innovative power solutions for more than **30** years....

Model:GT-91087

July 16, 2019

Approvals

Logo

Description

CHINA SJ/T 11364-2014, China RoHS Chart: <http://en.globtek.com/globtek-rohs.php>

RoHS

Specifications of directive 2011/65/EU Annex VI (ROHS-2) with amendment 2015/863-EU (ROHS-3)

<http://www.ce-mark.com/Rohs%20final.pdf>